



BEST IN CLASS SCHOOLWEAR



# AC001 Academy Raglan Sweatshirt

- ★ Crew neck sweat
- ★ Raglan sleeves
- ★ Ribbed neckline, cuffs and hemline
- ★ Soft cotton faced fabric creates ideal printing surface
- ★ Name label at back neck
- ★ Taped Neck
- ★ Twin Needle stitching for durability

Sizes: XS S M L XL XXL

To fit: 34" 36" 40" 44" 48" 52"

### Fabric Content:

80% Ringspun Cotton / 20% Polyester

Fabric Weight: 280gsm

EMERALD



BLACK



NAVY



PURPLE



DEEP ROYAL



GREEN



BURGUNDY



CLARET



ROYAL BLUE



EMERALD



GREY



RED



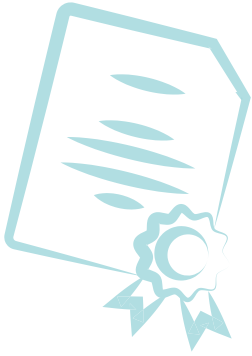
SKY



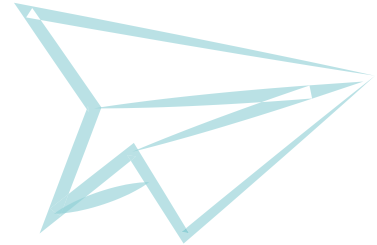
SAPPHIRE BLUE



CHARCOAL



CHARCOAL





# AC001J Kids Academy Raglan Sweatshirt

- ★ Crew neck sweat
- ★ Raglan sleeves
- ★ Ribbed neckline, cuffs and hemline
- ★ Soft cotton faced fabric creates ideal printing surface
- ★ Name label at back neck
- ★ Taped Neck
- ★ Twin Needle stitching for durability

Sizes (Age): XS(3/4) S(5/6) M(7/8) L(9/10) XL(11/12) XXL(13)

To fit: 26" 28" 30" 32" 34" 36"

Height (cm): 102 114 126 138 150 156

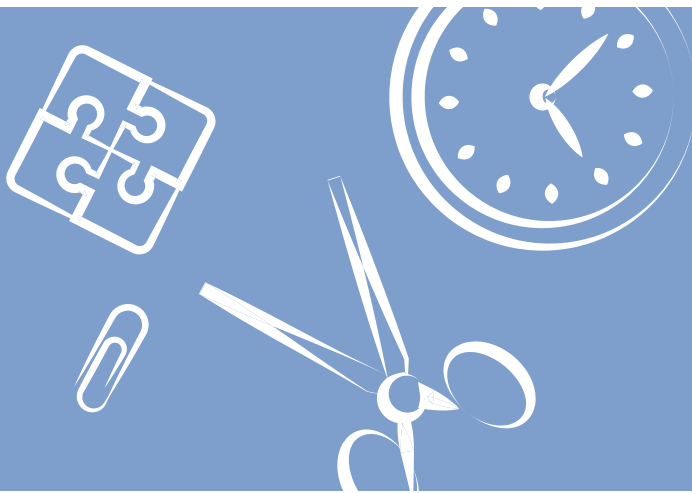
**Fabric Content:**

80% Ringspun Cotton / 20% Polyester

Fabric Weight: 280gsm



NAVY



BLACK



NAVY



PURPLE



DEEP ROYAL



GREEN



BURGUNDY



CLARET



ROYAL BLUE



EMERALD



GREY



RED



SKY



SAPPHIRE BLUE



CHARCOAL



BURGUNDY

ROYAL  
BLUE



# AC002J Kids Academy Cardigan

- ★ Set in sleeves
- ★ Ribbed cuffs and hemline
- ★ 2 patch front pockets
- ★ Self coloured button fastening
- ★ Soft cotton faced fabric creates ideal printing surface
- ★ Name label at back neck
- ★ Taped neck
- ★ Twin needle stitching for durability

Sizes (Age): XS(3/4) S(5/6) M(7/8) L(9/10) XL(11/12) XXL(13)

To fit: 26" 28" 30" 32" 34" 36"

Height (cm): 102 114 126 138 150 156

### Fabric Content:

80% Ringspun Cotton / 20% Polyester

Fabric Weight: 280gsm

GREEN



NAVY



PURPLE



DEEP ROYAL



ROYAL BLUE



GREEN



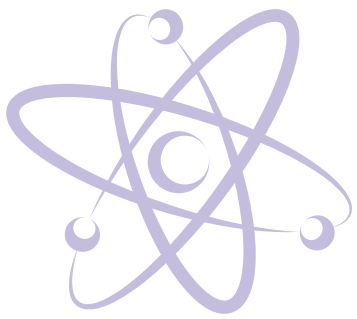
BURGUNDY



CLARET



RED



PURPLE





# AC003 Academy V-Neck Sweatshirt

- ★ V-neck sweat
- ★ Set in sleeves
- ★ Ribbed neckline, cuffs and hemline
- ★ Soft cotton faced fabric creates ideal printing surface
- ★ Name label at back neck
- ★ Taped neck
- ★ Twin Needle stitching for durability

Sizes: XS S M L XL XXL

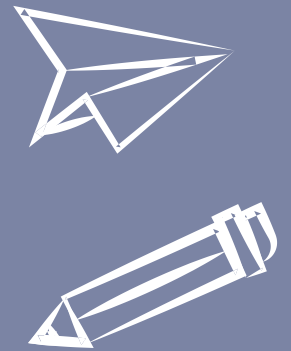
To fit: 34" 36" 40" 44" 48" 52"

#### Fabric Content:

80% Ringspun Cotton / 20% Polyester

Fabric Weight: 280gsm

BLACK



BLACK



NAVY





AWDis

NAVY

# AC003J Kids Academy V-Neck Sweatshirt

- ★ V-neck sweat
- ★ Set in sleeves
- ★ Ribbed neckline, cuffs and hemline
- ★ Soft cotton faced fabric creates ideal printing surface
- ★ Name label at back neck
- ★ Taped neck
- ★ Twin Needle stitching for durability

Sizes (Age): XS(3/4) S(5/6) M(7/8) L(9/10) XL(11/12) XXL(13)

To fit: 26" 28" 30" 32" 34" 36"

Height (cm): 102 114 126 138 150 156

### Fabric Content:

80% Ringspun Cotton / 20% Polyester

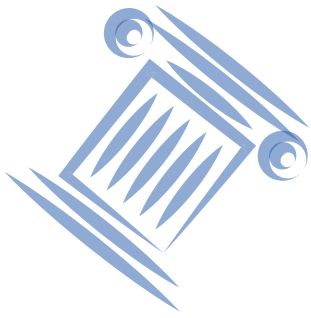
Fabric Weight: 280gsm

ROYAL  
BLUE





BLACK



# AC004 Academy Polo **NEW**

- ★ Relaxed fit
- ★ Reinforced shoulder seams
- ★ 1x1 flat knitted collar and cuffs
- ★ Two button placket
- ★ Name label at back neck
- ★ Taped Neck
- ★ Spare button
- ★ Twin Needle stitching for durability

Sizes: XS S M L XL XXL

To fit: 34" 36" 40" 44" 48" 52"

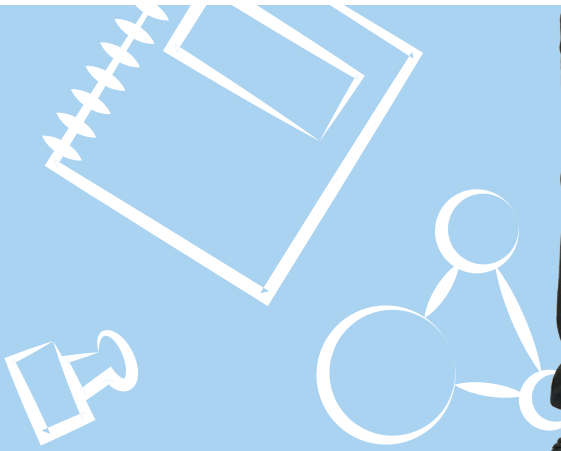
### Fabric Content:

50% Cotton / 50% Polyester

Fabric Weight: 220gsm



SKY



RED



ROYAL BLUE



SKY



WHITE

# AC004J Kids Academy Polo **NEW**



- ★ Relaxed fit
- ★ Reinforced shoulder seams
- ★ 1x1 flat knitted collar and cuffs
- ★ Two button placket
- ★ Name label at back neck
- ★ Taped Neck
- ★ Spare button
- ★ Twin Needle stitching for durability

Sizes (Age): XS(3/4) S(5/6) M(7/8) L(9/10) XL(11/12) XXL(13)

To fit:            26"     28"     30"     32"     34"     36"

Height (cm): 102    114    126    138    150    156

**Fabric Content:**

50% Cotton / 50% Polyester

WHITE

Fabric Weight: 220gsm



ROYAL  
BLUE



RED



ROYAL BLUE



SKY



WHITE



# Our Ethics

We're passionate about doing things the right way at AWDIs, which is why we use WRAP (Worldwide Responsible Accredited Production) certified factories.

WRAP's "12 Principles" are based on accepted international workplace standards and regulations which encompass human resources management, health and safety, environmental practices, legal compliance including import/export and customs conformity, security standards and local laws.

WRAP has grown to become a global leader in social compliance. Its comprehensive inspection and certification process has made it the world's largest independent social compliance certification program for the apparel/textile industry.



We and our global partners have a shared commitment to fair and safe working practices throughout our supply chain. We recognize our responsibility to ensure the manufacturing methods used match the ideals of those that wear and love our products.





**AWDis**  
**ACADEMY**

[www.awdisacademy.com](http://www.awdisacademy.com)

